

© 2014 COASTLINE LED. THIS DOCUMENT MUST NOT BE REPRODUCED IN WHOLE OR IN PART AND MUST NOT BE USED OR DISCLOSED WITHOUT THE WRITTEN AUTHORISATION OF COASTLINE LED. NO DEVIATION FROM THIS DRAWING IS PERMISSIBLE WITHOUT WRITTEN AUTHORISATION FROM COASTLINE LED.

ALL DIMENSIONS ARE IN MILLIMETERS

TOLERANCES ON ALL DIMENSIONS UNLESS OTHERWISE STATED

WHOLE UNITS: ±0.25
 ONE DECIMAL PLACE: ±0.1
 TWO DECIMAL PLACES: ±0.05
 ANGLES: ±0.5°

ALL UNSPECIFIED CHAMFERS: 1 x 45°
 BREAK ALL SHARP EDGES: 0.1 TO 0.5

ISS	REV	STATUS	DATE	CHANGE	DRAWN	CHECKED	APPROVED
E00	A	REL	08/02/2018		DWL	DWL	APH

NOTES:

PPN:

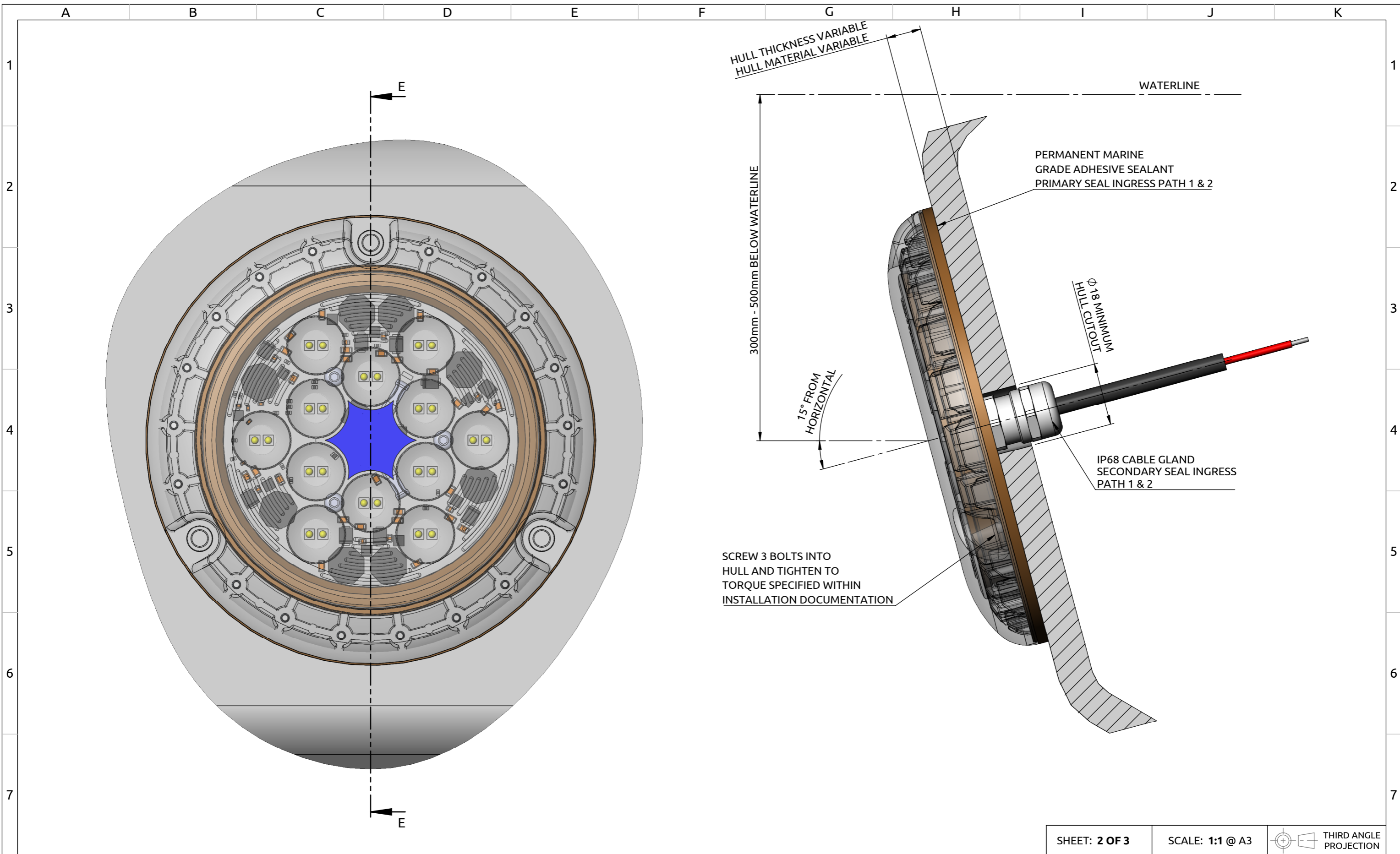
SHEET: 1 OF 3 SCALE: 1:1 @ A3 THIRD ANGLE PROJECTION

DESCRIPTION: **P24 SERIES HIGH POWER SURFACE MOUNT LIGHT**

MATERIAL: MARINE AB2 BRONZE & POLYMER LENS

FINISH: SEE PART DRAWINGS

DRAWING No: **GAA-0142 Iss E00A** ISSUE: **E00** REV: **A** STATUS: **RELEASED**



SHEET: 2 OF 3

SCALE: 1:1 @ A3

THIRD ANGLE PROJECTION

© 2014 COASTLINE LED. THIS DOCUMENT MUST NOT BE REPRODUCED IN WHOLE OR IN PART AND MUST NOT BE USED OR DISCLOSED WITHOUT THE WRITTEN AUTHORISATION OF COASTLINE LED. NO DEVIATION FROM THIS DRAWING IS PERMISSIBLE WITHOUT WRITTEN AUTHORISATION FROM COASTLINE LED.

ALL DIMENSIONS ARE IN MILLIMETERS

TOLERANCES ON ALL DIMENSIONS UNLESS OTHERWISE STATED

WHOLE UNITS: ±0.25
 ONE DECIMAL PLACE: ±0.1
 TWO DECIMAL PLACES: ±0.05
 ANGLES: ±0.5°

ALL UNSPECIFIED CHAMFERS: 1 x 45°
 BREAK ALL SHARP EDGES: 0.1 TO 0.5

ISS	REV	STATUS	DATE	CHANGE	DRAWN	CHECKED	APPROVED
E00	A	REL	08/02/2018		DWL	DWL	APH

NOTES:

PPN:

DESCRIPTION: P21 SERIES HIGH POWER SURFACE MOUNT LIGHT			
SECTION E-E			
MATERIAL:		MARINE AB2 BRONZE & POLYMER LENS	
FINISH:		SEE PART DRAWINGS	
DRAWING No:	ISSUE:	REV:	STATUS:
GAA-0142 Iss E00A	E00	A	RELEASED